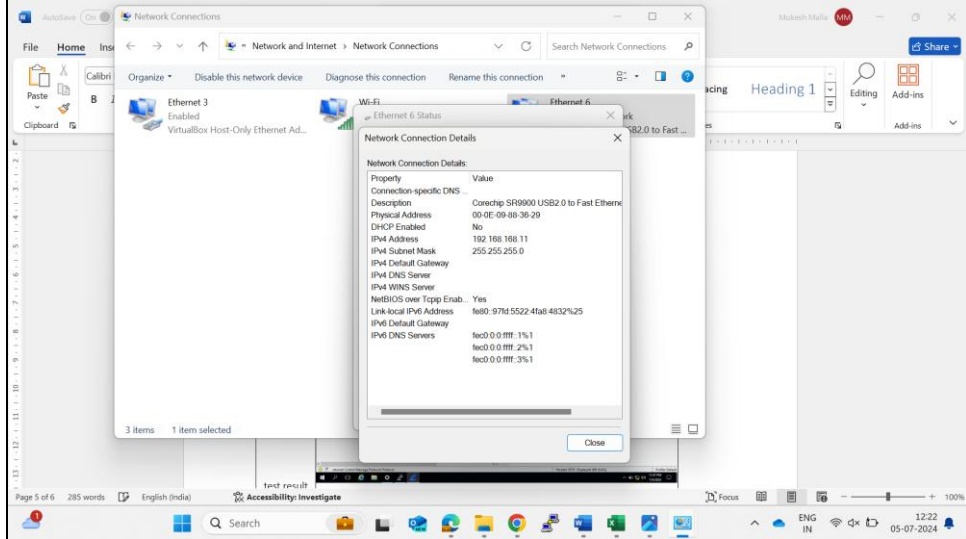


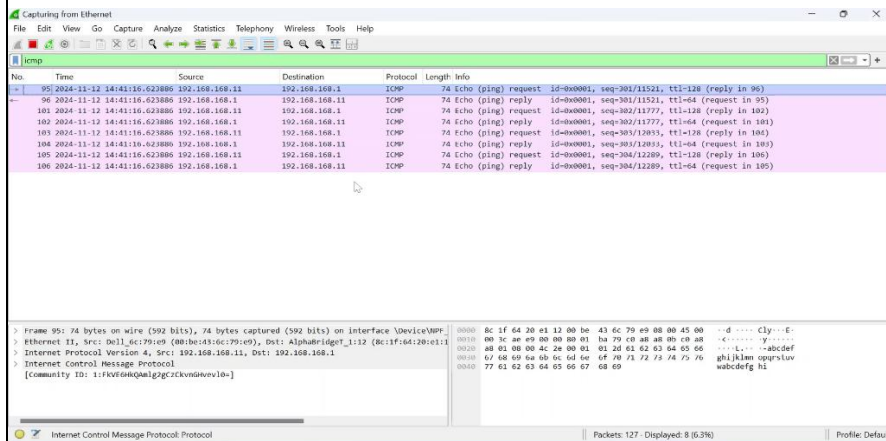
1. Port Mirroring

<p>Test Case</p>	<p>Port Mirroring</p>
<p>Test procedure</p>	<ol style="list-style-type: none"> 1. Connect 2 PC's for 1 switch. 2. Assign Ip address in both PC-1 and PC-2. 3. Run Wireshark in PC-1 4. Ping Switch from PC-2 or telnet Switch from PC-2. <div style="text-align: center;"> <p>VLAN -1 IP Address of Switch - 192.168.168.1/24</p> <p>G 0/0/1 G 0/0/3</p> <p>IP Address of PC-2 IP Address of PC-1 192.168.168.11/24 192.168.168.21/24</p> </div>
<p>configuration</p>	<p>Configuration:</p> <pre>[Switch]display current-config enable system-view !!!VLAN vlan 10 quit !!!DEVICE mirror group 1 destination-interface ethernet 0/0/3 mirror group 1 source-interface ethernet 0/0/1 ingress mirror group 1 source-interface ethernet 0/0/1 egress !!!IF interface vlan-interface 1 ip address 192.168.168.1 255.255.255.0 quit</pre> <p>Laptop-1</p>

Laptop-2

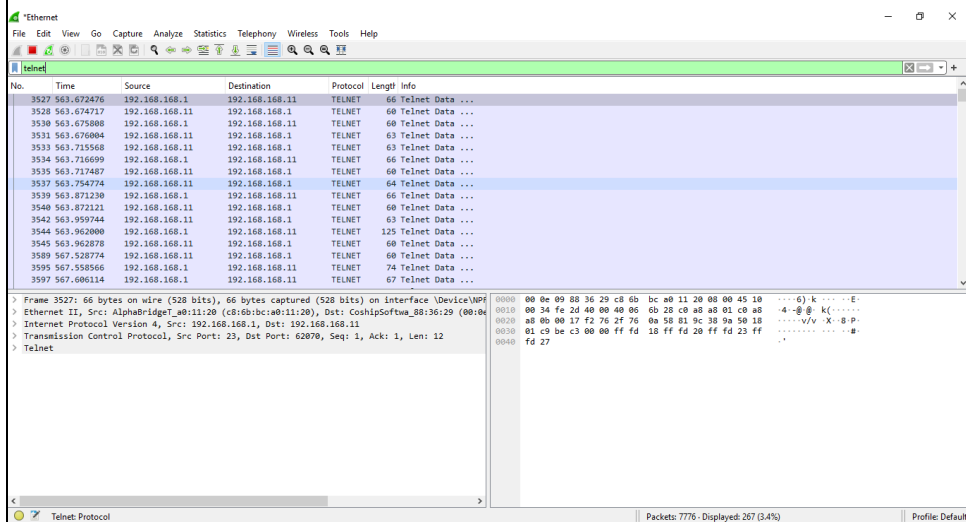


ICMP Packets from PC-2 to Switch



test result

Telnet Packets from PC-2 to switch



Remarks working